

**EL-PANEL EXCHANGE MANUAL
FOR
ROLAND D-70**



ROLAND D-70



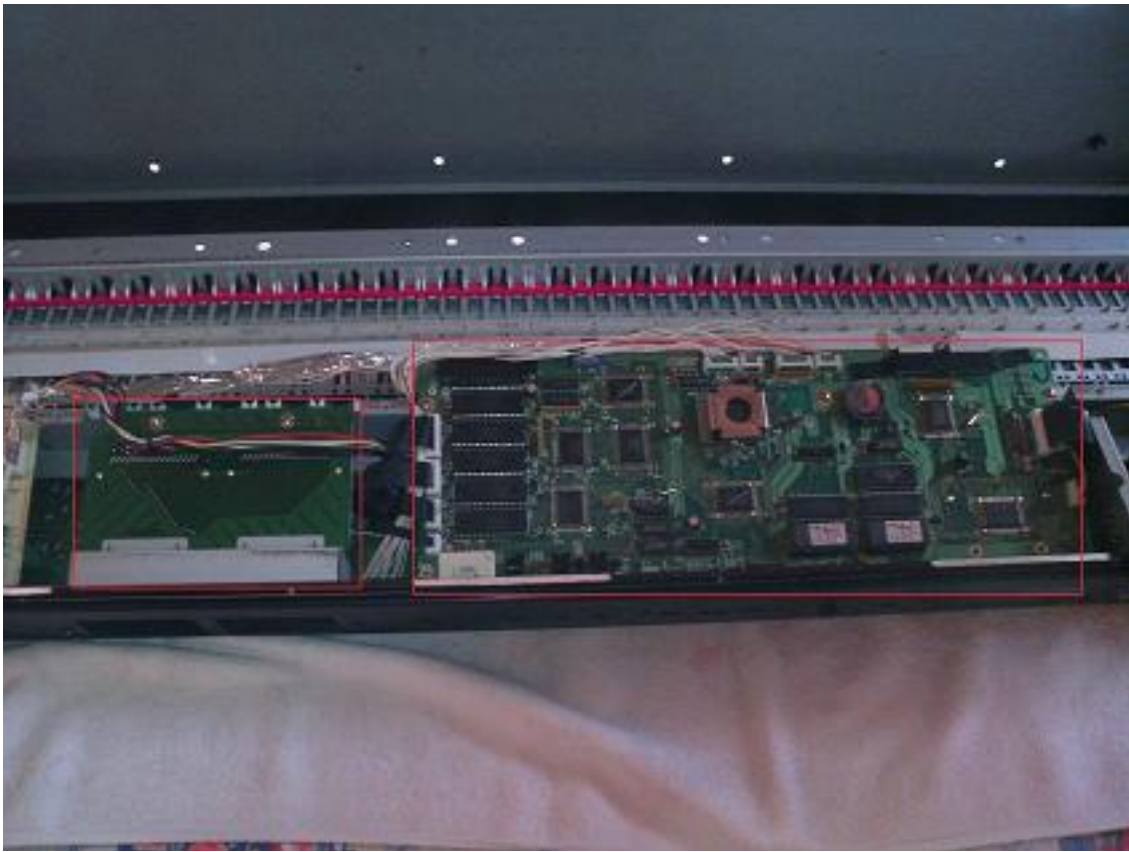
ROLAND D-70 WITH DEAD EL-PANEL



START LOOSENING THE SCREWS (23 INDICATED BY RED CIRCLES) OF THE BOTTOM CASE COVER OF THE KEYBOARD, EXCEPT THE SCREWS LOCATED IN THE RUBBER FEET



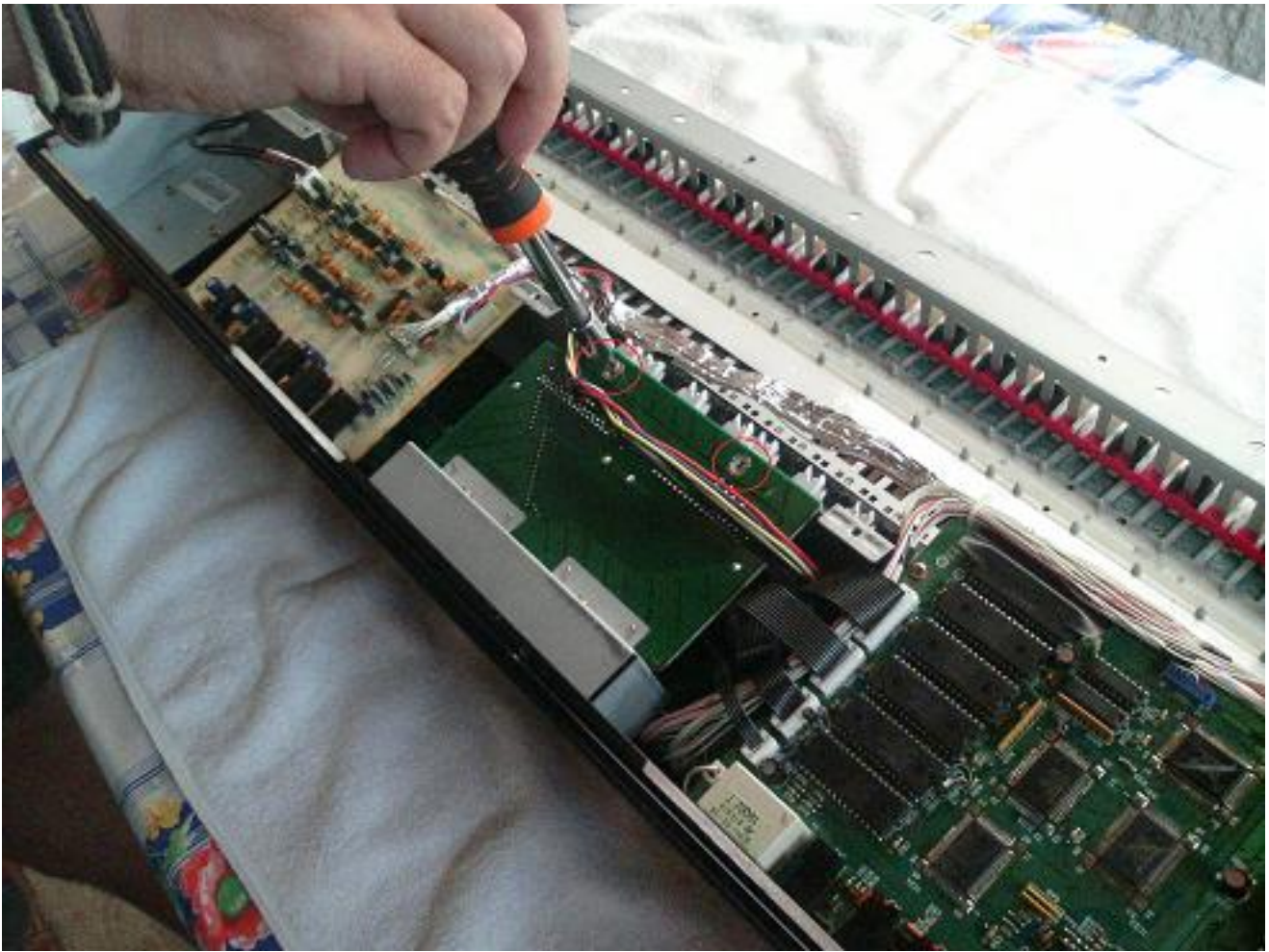
AFTER REMOVE OF THE CASING BOTTOM COVER, THE CASING LOOKS LIKE THIS



YOU CAN SEE THE PCM CARD DEVICE (ON THE LEFT) AND THE MOTHERBOARD (ON THE RIGHT)



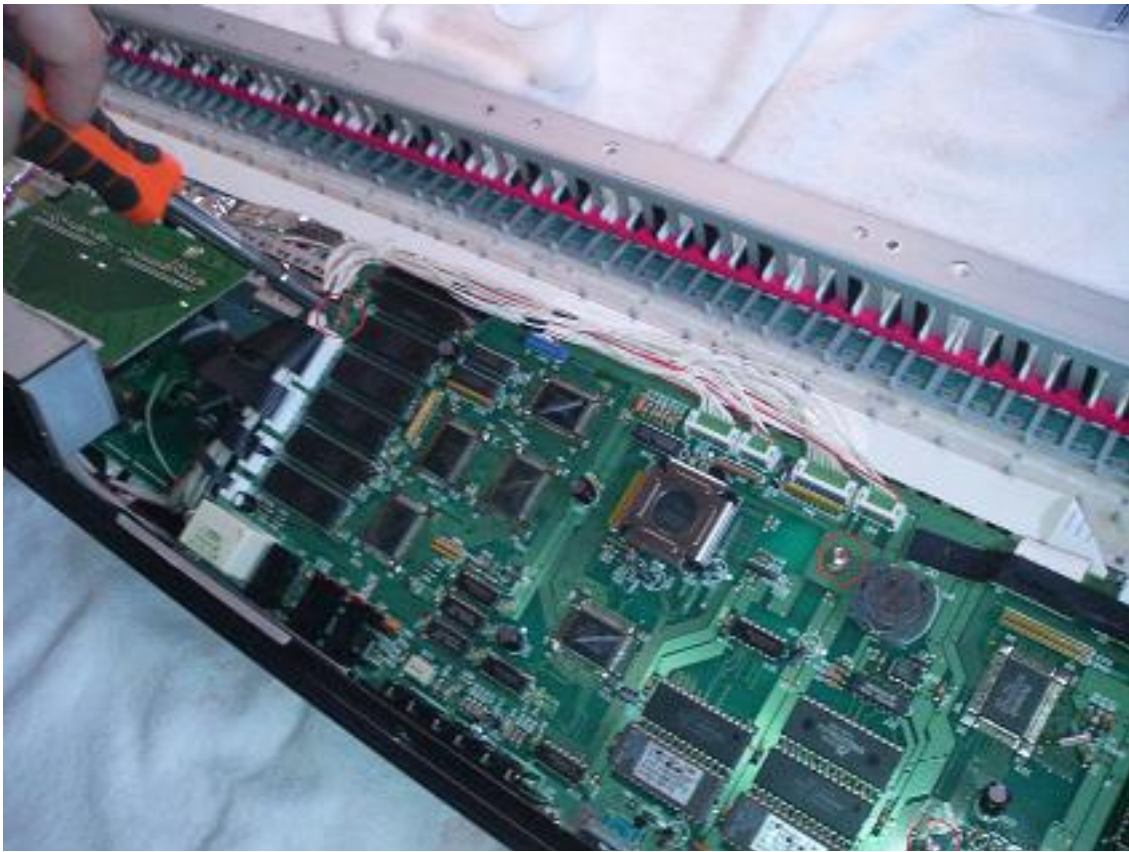
LOOSE THE 2 EXTERNAL SCREWS INDICATING THE PCM CARD



REMOVE THE 2 INTERNAL SCREWS THAT LOCKS THE PCM CARD



REMOVE THE 3 SCREWS CLOSE TO THE OTHER SLOT ON THE RIGHT



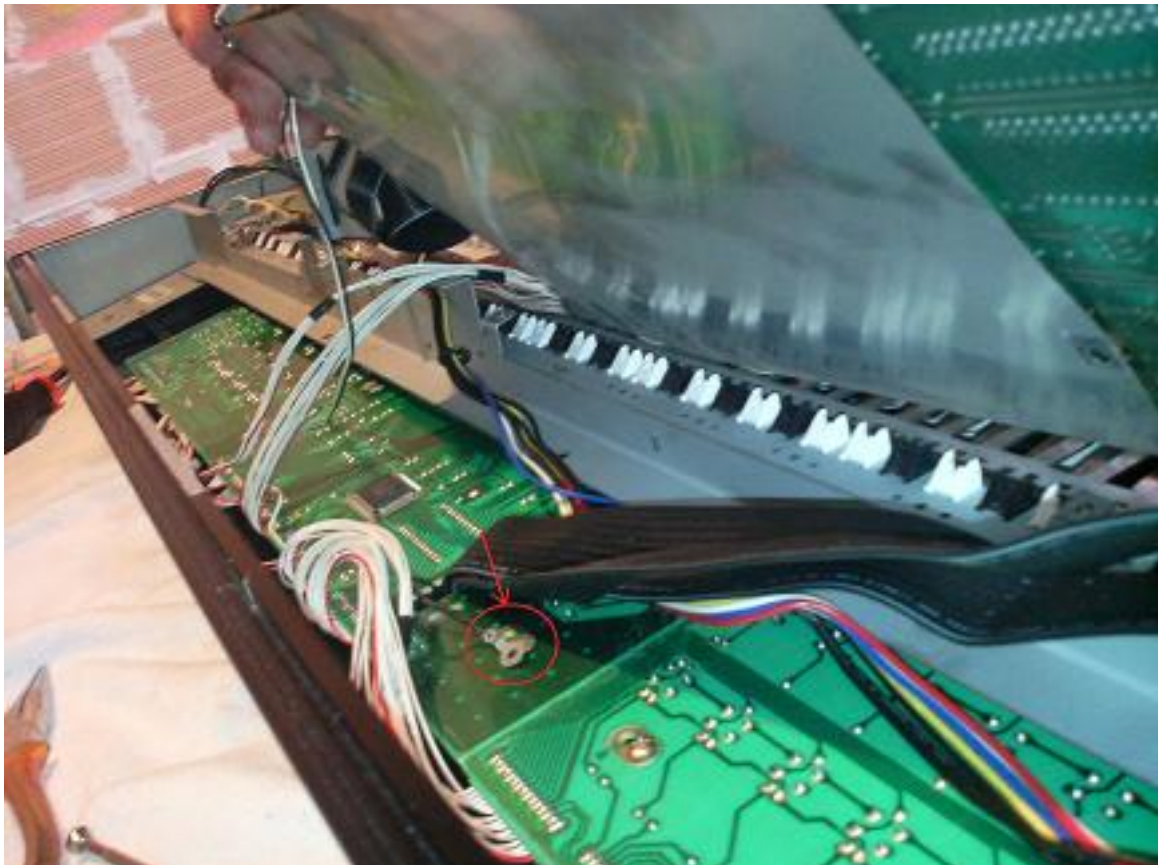
REMOVE THE 3 INTERNAL SCREWS (INDICATED BY RED CIRCLES) THAT LOCK THE MOTHERBOARD INTO THE CASE



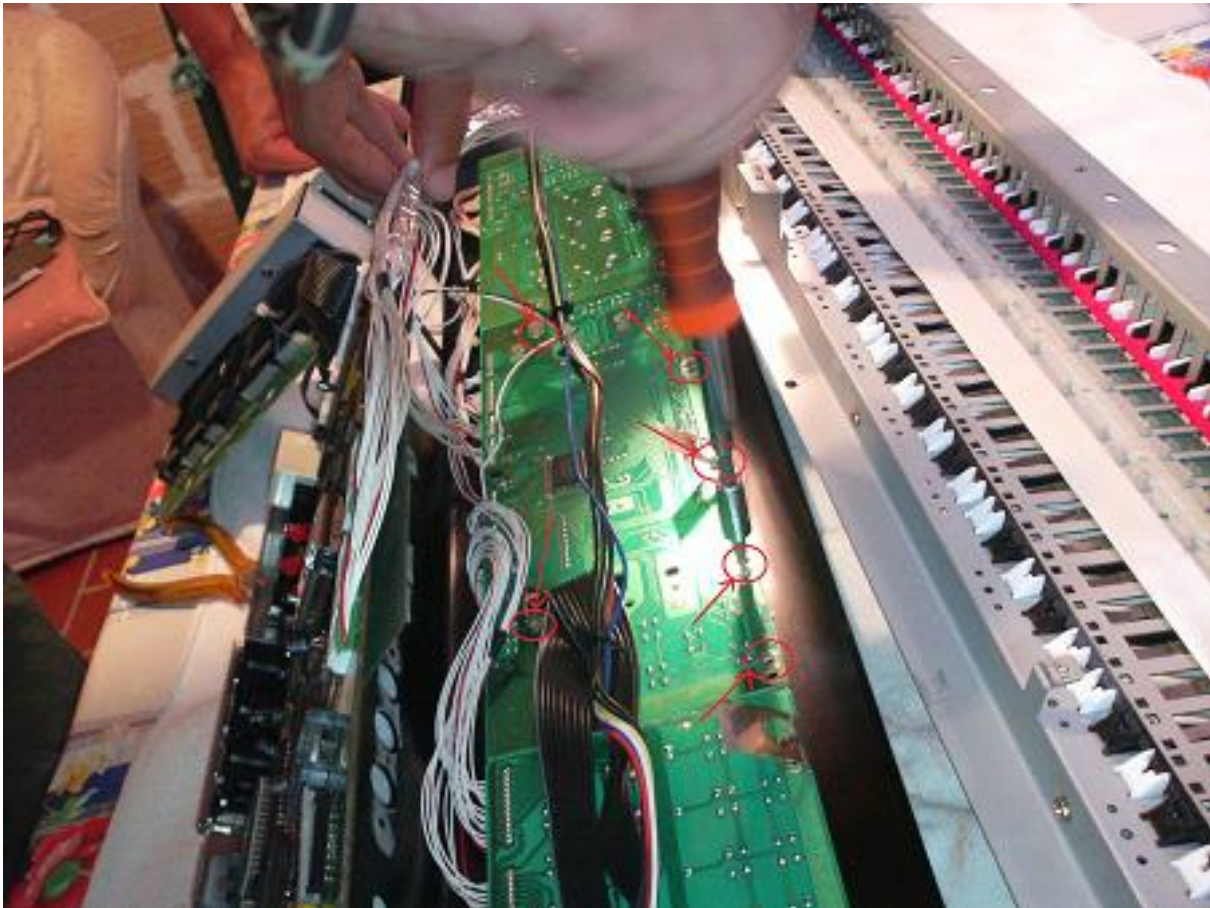
PULL UP THE PCM SLOT CARD AND THE MOTHERBOARD TO EXPOSE THE DISPLAY DEVICE



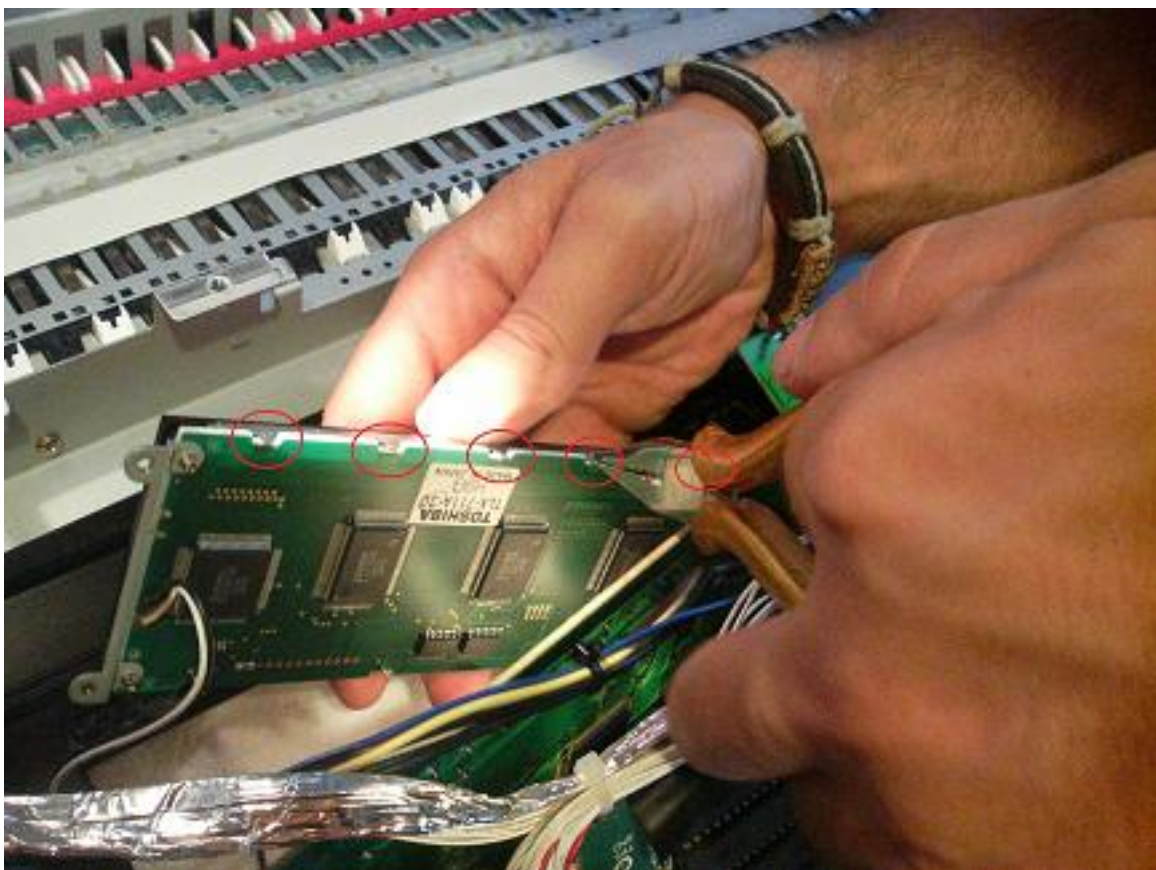
REMOVE THE 4 SCREWS THAT LOCKS THE DISPLAY GROUP



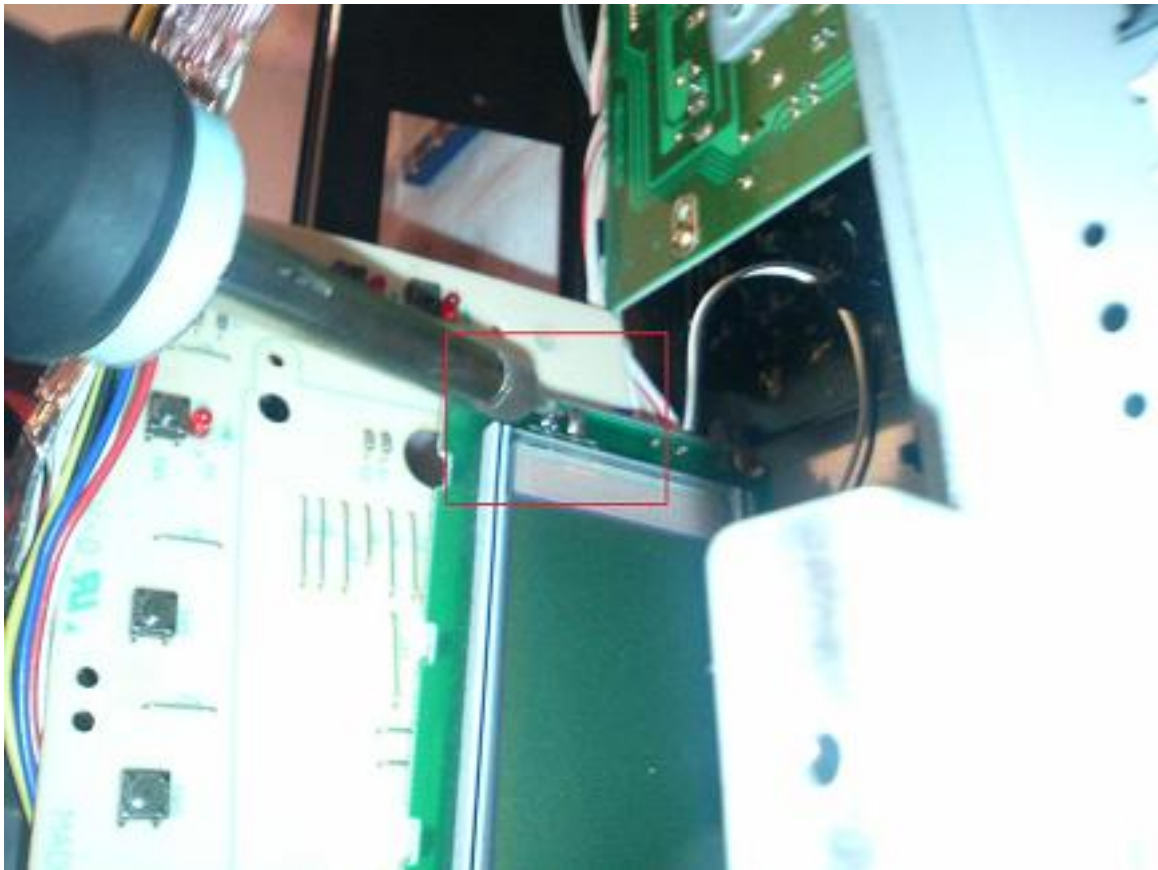
UNPLUG THE LITTLE BLACK GROUND CABLE THAT YOU CAN EXTRACT THE DISPLAY GROUP, COMPLETELY



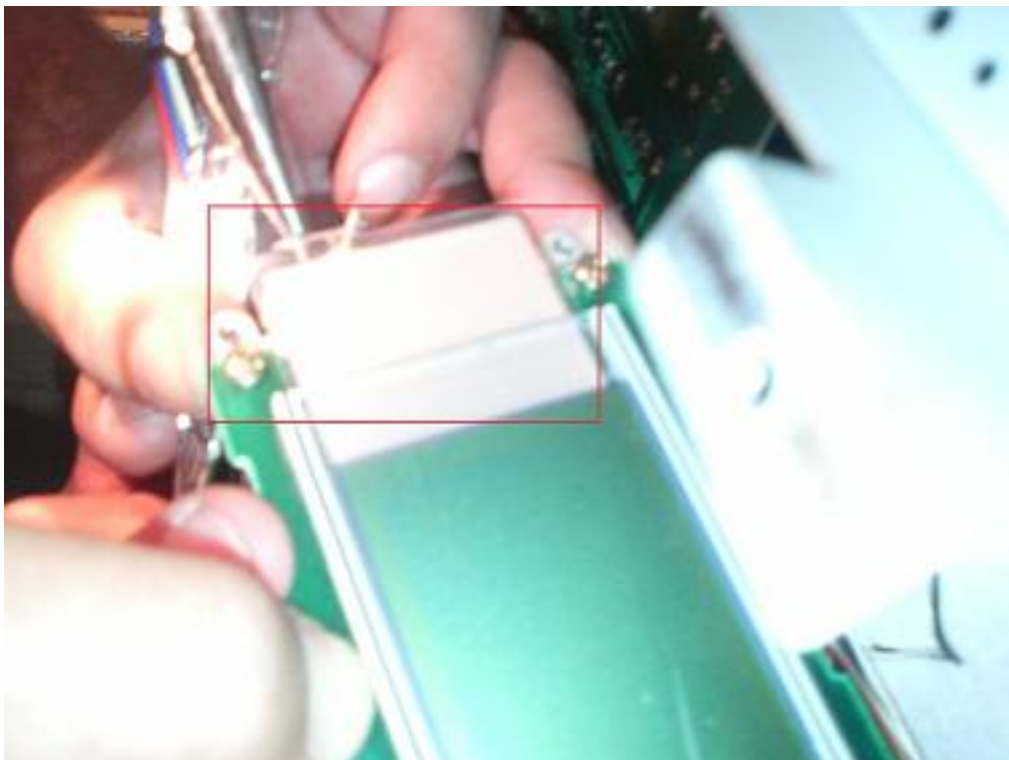
IN OTHER CASE (KEYBOARD ALREADY OPENED BY A TECHNICIAN) YOU CAN SEE 3 OR 6 SCREWS TO LOOSE



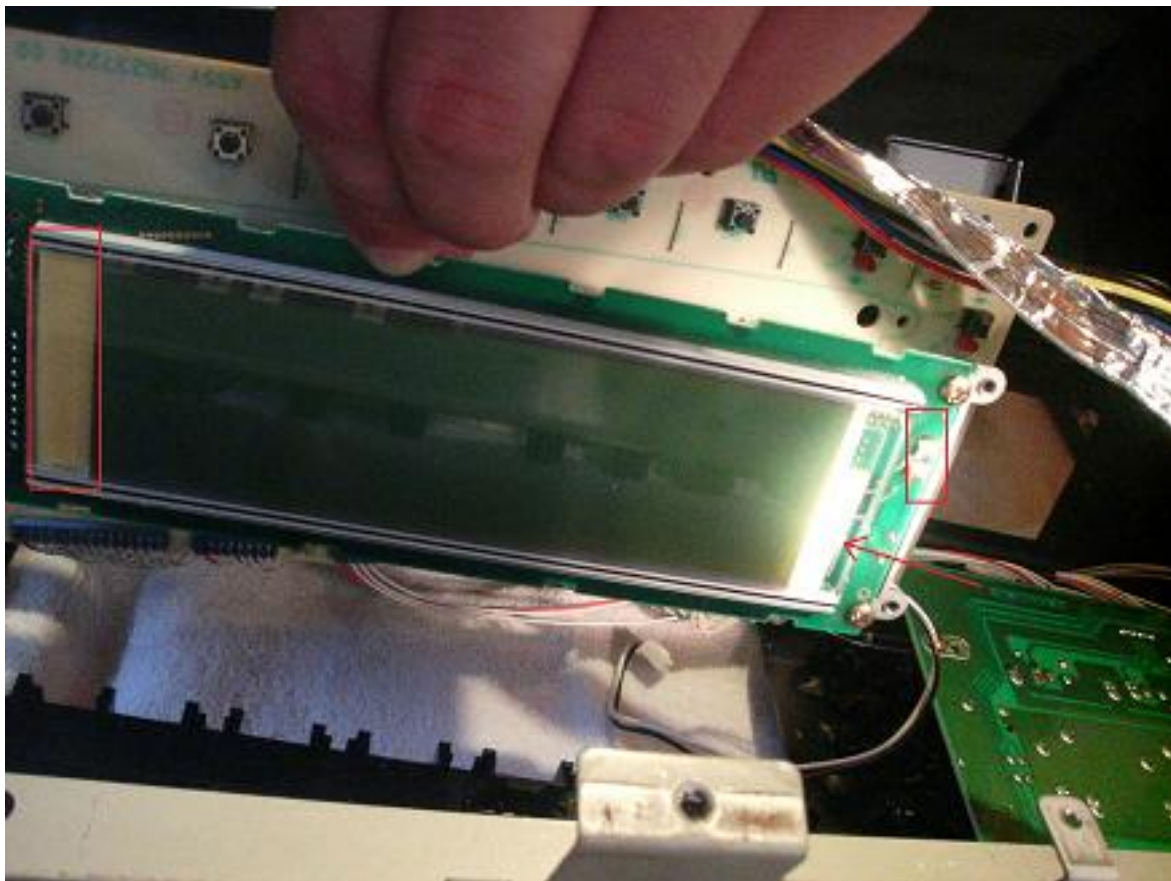
SEPARATE THE DISPLAY BLOCK FROM CHASSIS AND SPIN THE 6 REEDS TO SHOW THE EL-PANEL



DESOLDER 2 PINS THAT LINK THE EL-PANEL



PULL-OUT THE EL-PANEL BY TWEEZERS AND INSERT THE NEW (VIEW NEXT PHOTO)



RE-SOLDER THE NEW PANEL. YOU CAN SEE A PART OF THE NEW PANEL (YELLOW SIDE ON THE LEFT).



REASSEMBLY THE KEYBOARD IN THE REVERSE WAY AS DISASSEMBLED. AFTER LOCKING THE LAST SCREW YOU CAN SEE THE SHINE OF YOUR DISPLAY AS IN THE PHOTO.

Many Thanks to Luigi Di Pasquale for his excellent pictures and text for the backlight exchange.

©2010 backlight4you