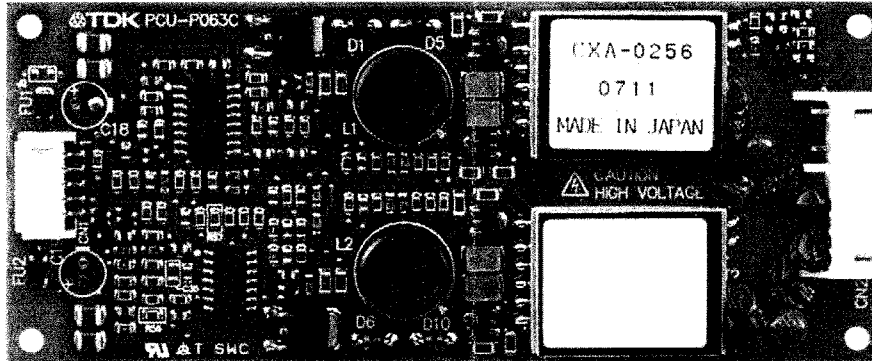


CCFI-Inverter TDK CXA-0256



Description

This DC to AC Inverter was developed for large size LCD panel als Multiple Media, Replacement of CRT Monitor and other general Purpose.

Applicable LCD:

18 to 20 inches Double lamps type
(2 DC/AC Inverters for 4 lamps LCD)
 lamp Voltage 750 Vrms (per lamp)
 lamp Current 6 mArms (per lamp)

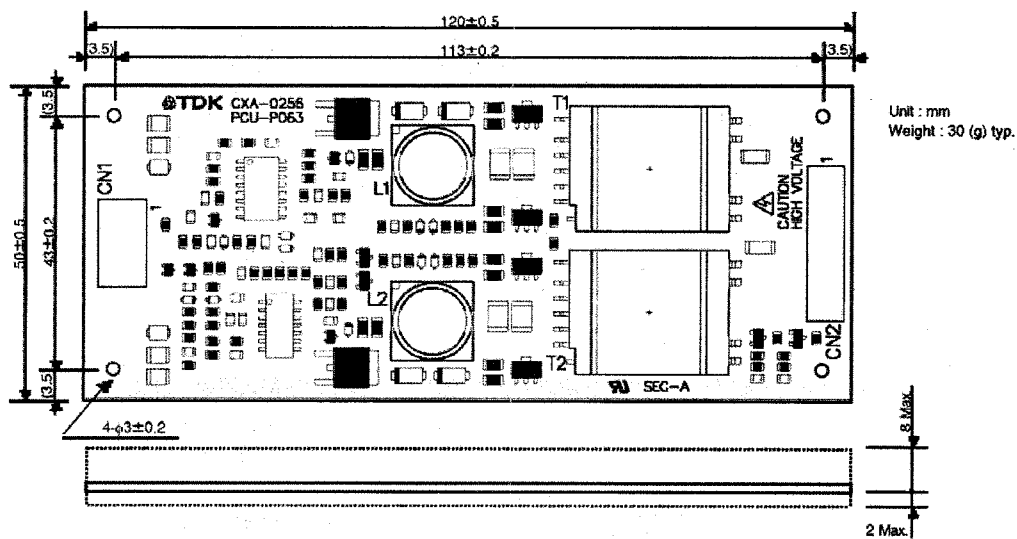
Features:

High efficiency
 Fuse protection
 Low noise with voltage resonant circuit
 Wide Input Voltage
 Wide Dimming Range (By Internal PWM Control Circuit)
 Individual Lamp Current Feedback

Temperature & Humidity:

Operating Temperature Range 0 °C...+50 °C
 Storage Temperature Range -30 °C...+70 °C
 Humidity 95% RH max.

Dimensions



Dimensions

No.	Part Description	Qty.	Note
1	PWB UL94V-0 (FR-4 or CEM-3)	1	t = 1,0 mm
2	CN1 S5B-PH-SM3-TB	1	(JST) Recommended Mate: PHR-5 (JST)
3	CN2 S9B-XH-A	1	(JST) Recommended Mate: XHP-9 (JST)

CN1: S5B-PH-SM3-TB (JST)

Pin	Symbol	Note
CN1-1	Vin	9,6...14,4 Vdc
CN1-2	GND	0 Vdc
CN1-3	Vbr	0...1,5 Vdc
CN1-4	Vst	Alarm (Abnormal: 0 V)
CN1-5	Vrmt	0/2...14,4 Vdc (H active)

CN2: S9B-XH-A (JST)

Pin	Symbol	Note
CN2-1	Vhigh1	750 Vrms (6 mArms)
CN2-2	N.C.	
CN2-3	N.C.	
CN2-4	Vhigh2	750 Vrms (6 mArms)
CN2-5	N.C.	
CN2-6	N.C.	
CN2-7	Vlow	(0,6 V)
CN2-8	N.C.	
CN2-9	Vlow	(0,6 V)

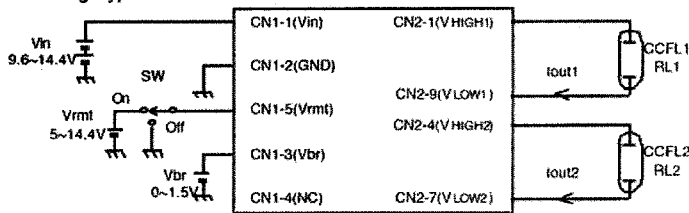
Electrical Characteristics

Normal Mode (CN1-5: Open)

Parameter	Symbol	Conditions				Specifications				Note	
		Vin (V)	Vbr (V)	Vrmt (V)	Ta (°C)	RL (kΩ)	min.	typ.	max.		Unit
Output Current (Lamp Current)	Iout	12±2.4	0			90...120	-	6.0	-	mArms	Max. Brightness
		12±1.2	1.3±0.05	5±0.25	0...50	105±5	-	2.0	-	mArms	Min. Brightness
Input Current	Iin		0...1.5			90...120	-	850	-	mA	
Frequency	FL	12±2.4					-	55	-	kHz	
Open Voltage	Vopen		0			∞	1800	2000	-	Vrms	

Application (for example)

Voltage Dimming Type



None Dimming Type

